

Monton Office

0161 789 8383
222 Monton Road, Monton
M30 9LJ
@homeinmonton



32 Longview Drive Swinton Manchester M27 9GJ

£1,650 Per calendar month

FULLY RENOVATED PROPERTY! STUNNING FAMILY ACCOMMODATION! HOME ESTATE AGENTS are thrilled to offer this extended and fully renovated three bedroom semi detached located on this "tucked away" residential Swinton street. The property comprises porch, hallway, entrance W/C, bay-fronted lounge, impressive open plan kitchen/diner with newly extended and stunning kitchen, shaped landing with stairs to the useful loft room, three bedrooms and a newly installed bathroom suite. The property benefits a newly installed gas central heating system and double glazing. Externally there is a block paved driveway to the front and side whilst to the rear there is a recently landscaped and lawn garden. Available NOW and on an un-furnished basis! Call HOME On 01617898383 to view!

- FULLY RENOVATED PROPERTY!
- STUNNING FAMILY ACCOMMODATION!
- Extended and fully renovated three bedroom semi detached
- Porch and hallway with W/C
- Bay-fronted Lounge with log burner
- Fantastic, open plan kitchen/diner/family room to the rear
- Three bedrooms PLUS useful LOFT ROOM
- Newly installed bathroom suite
- Ample off road parking and garden to the rear
- Not overlooked to the front!



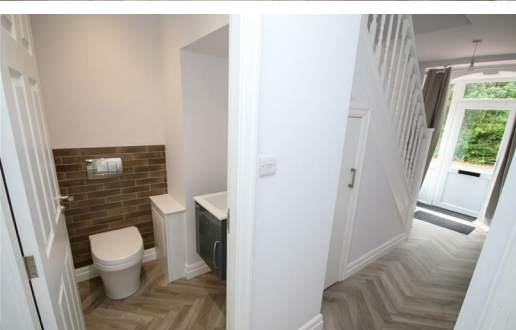
LOCAL EXPERTS THAT GET YOU MOVING

 www.homeestateagents.com

Lettings info

We are advised that the current council tax band is band A.

The current EPC rating is TBC.



LOCAL EXPERTS THAT GET YOU MOVING

 www.homestateagents.com



Registered Address Vantage House, East Terrace Business Park, Euxton Lane, Euxton PR7 6TB - England
Company Registration numbers Monton - 9262084 Urmston - 04331861 Stretford - 08259553



LOCAL EXPERTS THAT GET YOU MOVING

www.homeestateagents.com



Registered Address Vantage House, East Terrace Business Park, Euxton Lane, Euxton PR7 6TB - England
Company Registration numbers Monton - 9262084 Urmston - 04331861 Stretford - 08259553

Energy Efficiency Rating		
	Current	Potential
Very energy efficient - lower running costs		
(92 plus) A		
(81-91) B		
(69-80) C		
(55-68) D		
(39-54) E		
(21-38) F		
(1-20) G		
Not energy efficient - higher running costs		
England & Wales	EU Directive 2002/91/EC	

Environmental Impact (CO ₂) Rating		
	Current	Potential
Very environmentally friendly - lower CO ₂ emissions		
(92 plus) A		
(81-91) B		
(69-80) C		
(55-68) D		
(39-54) E		
(21-38) F		
(1-20) G		
Not environmentally friendly - higher CO ₂ emissions		
England & Wales	EU Directive 2002/91/EC	

LOCAL EXPERTS THAT GET YOU MOVING

 www.homestateagents.com



Registered Address Vantage House, East Terrace Business Park, Euxton Lane, Euxton PR7 6TB - England
Company Registration numbers Monton - 9262084 Urmston - 04331861 Stretford - 08259553